



EDINBURG CITY COUNCIL
CITY OF EDINBURG, HIDALGO COUNTY, TEXAS

Location: City of Edinburg
City Hall-Council Chambers
415 West University Dr.
Edinburg, Texas 78539

WORK SESSION AGENDA
AUGUST 20, 2024
5:00 PM

1. CALL TO ORDER, ESTABLISH QUORUM

A. Pledge of Allegiance.

2. CERTIFICATION OF PUBLIC NOTICE

3. DISCLOSURE OF CONFLICT OF INTEREST

4. PUBLIC COMMENTS

The Mayor and City Council allow for a specific portion of the City Council Meeting to be dedicated to public comments. Public Comments are limited to three (3) minutes. Please note that this public comment period is not interactive. The City Council may not respond to public comments.

If a resident desires to make a public comment in person, please complete the Public Comments Form which will be located outside of the City Council Chambers and submit the completed form to the City Secretary prior to the commencement of the City Council Meeting. We ask for everyone's cooperation in following this procedure.

5. PRESENTATION AND REPORT

A. Presentation and Discussion Regarding the Alignment of State Highway 68 as Presented by the Texas Department of Transportation. [Tomas D. Reyna, Assistant City Manager]

6. ADJOURNMENT

I hereby certify this Notice of a City Council Work Session was posted in accordance with the Open Meetings Act, at the City Offices of the City of Edinburg, located at the 415 West University entrance outside bulletin board, visible and accessible to the general public during and after regular working hours. This notice was posted on August 16, 2024 at 6:30 p.m.

By: /s/ Clarice Y. Balderas
Clarice Y. Balderas, City Secretary

City of Edinburg, Texas

Disability Access Statement

Persons with disabilities who plan to attend this meeting and who may need auxiliary aid or services are requested to contact the City Secretary Department at (956) 388-8204 at least two business days prior to the meeting so that appropriate arrangements can be made. The accessible entrance and accessible parking spaces are located at Edinburg City Hall, 415 West University.



CITY OF EDINBURG - CITY COUNCIL

Meeting Date: August 20, 2024
PRESENTATION AND REPORT
Agenda Item No: 5.A.
Presentation on State Highway 68

1. Agenda Item:

Presentation and Discussion Regarding the Alignment of State Highway 68 as Presented by the Texas Department of Transportation. [Tomas D. Reyna, Assistant City Manager]

2. Description:

The purpose of the Texas Department of Transportation State Highway 68 (SH 68) project is to accommodate population growth and higher traffic volumes, while relieving the burden on the limited number of existing north-south roadways, and providing an alternate north-south evacuation route during emergency events.

The Texas Department of Transportation will be presenting the proposed alignment of State Highway 68 within the Edinburg City Limits.

3. Staff's Recommendation:

Discuss the Alignment of State Highway 68 as Presented by the Texas Department of Transportation.

Reviewed by:

Prepared by:

Tomas Reyna, Assistant City
Manager

Attachments:

A. 20240625_SH 68_City of Edinburg (1)



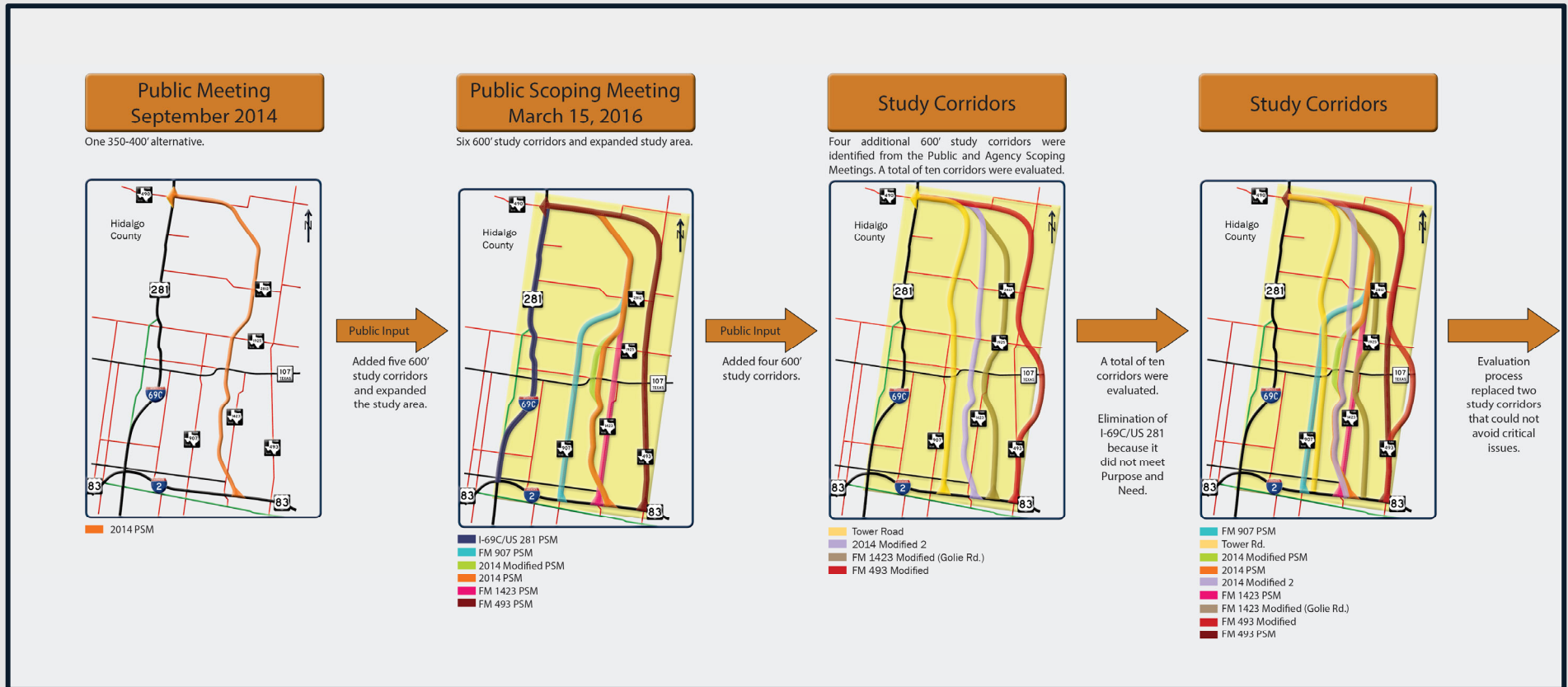
SH 68 PROJECT PRESENTATION

06/25/2024 - City of Edinburg



June 25, 2024

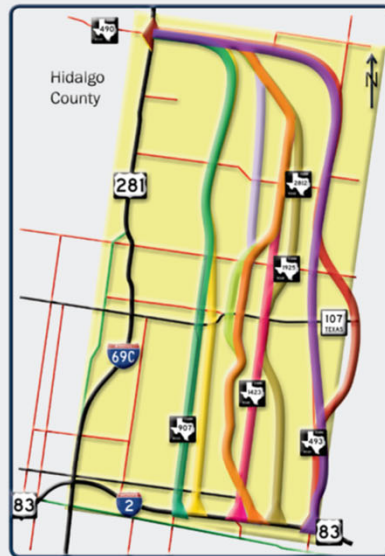
Project History (from 2014 – 2018)



Project History (from 2014 – 2018)

Preliminary Alternatives

These are the nine preliminary alternatives that were evaluated to determine the reasonable alternatives.

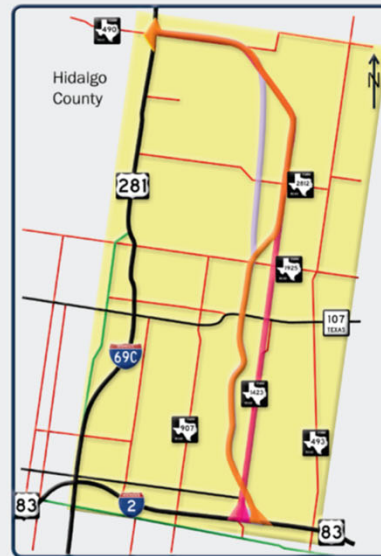


- FM 907 Modified (replaced FM 907 PSM)
- Tower Rd.
- 2014 Modified PSM
- 2014 PSM
- 2014 Modified 2
- FM 1423 PSM
- FM 1423 Modified (Golie Rd.)
- FM 493 Modified
- FM 493 Modified 2 (replaced FM 493 PSM)

Evaluation process replaced two study corridors that could not avoid critical issues.

January 3, 2017 Public Meeting

These are the three reasonable alternatives recommended for further analysis.

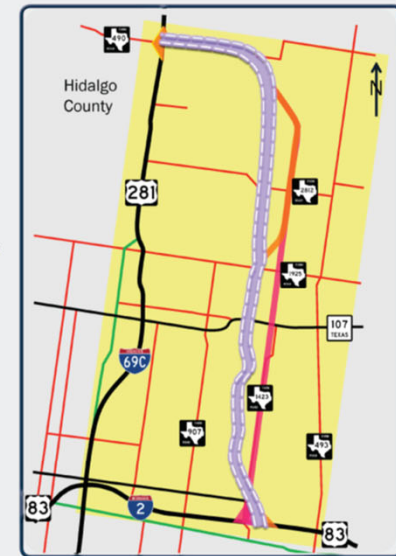


- 2014 PSM
- 2014 Modified 2
- FM 1423 PSM

Evaluation process refined the 600' study corridors to 350-400' alternatives. Six alternatives were eliminated.

April 5, 2018 Public Hearing

The recommended preferred alternative is presented below.



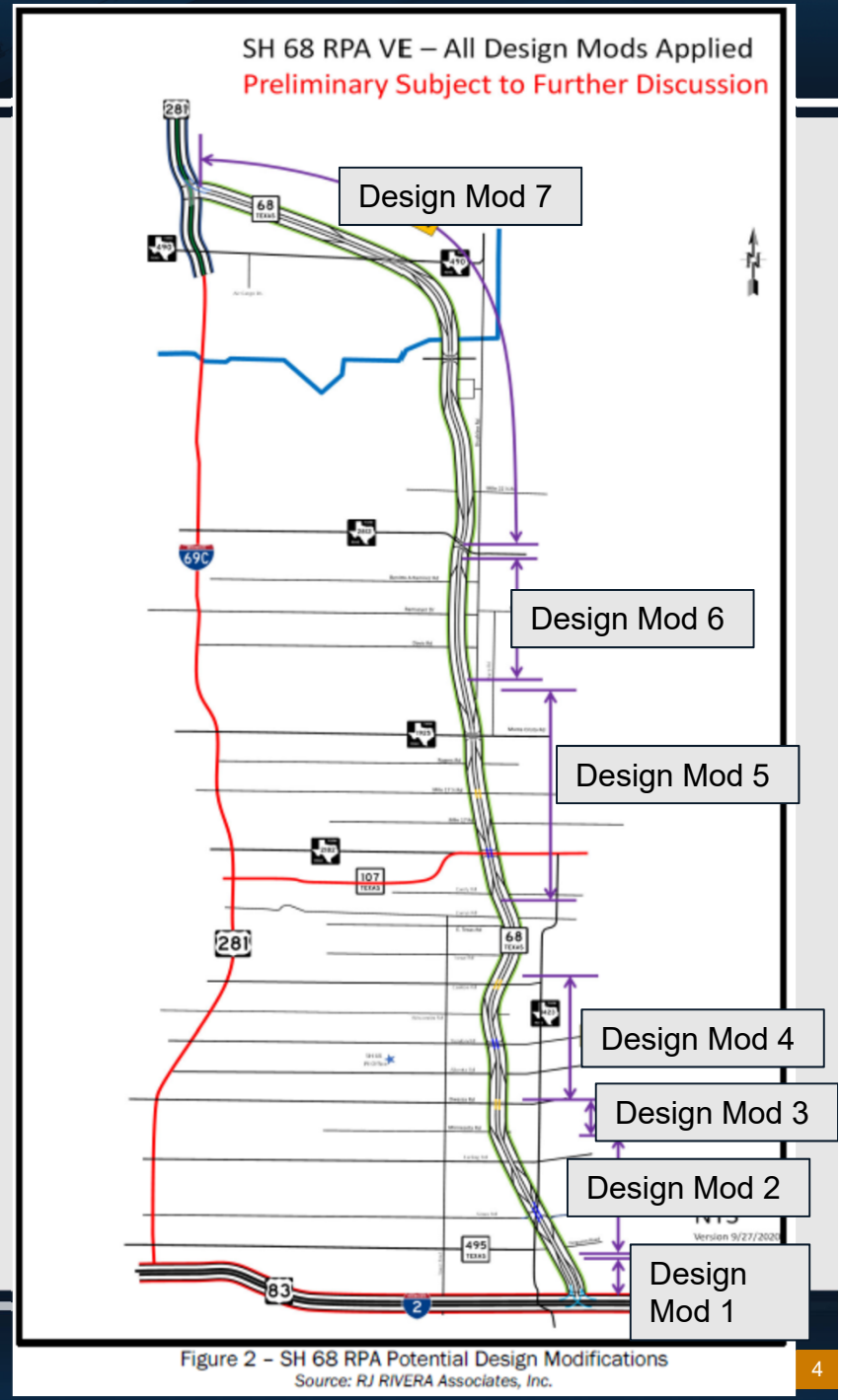
- 2014 PSM
- 2014 Modified 2
- FM 1423 PSM

Based on detailed environmental and engineering studies, the recommended preferred alternative was identified.

"2014 Modified 2" is referred as "Recommended Preferred Alignment" (RPA)

Design Modification Route (DMR)

- 7 DESIGN MODIFICATIONS WERE ASSESSED BETWEEN FALL OF 2019 AND EARLY 2021
- MODIFICATIONS RESULTED FROM:
 - PUBLIC INPUT
 - VALUE ENGINEERING STUDY
 - FURTHER DRAINAGE CONSIDERATIONS (ADDITIONAL IMPACTS NOT CONSIDERED IN THE DEIS).
 - REDUCE THE TOTAL NUMBER OF IMPACTS
- DESIGN MODIFICATION #7 REVISED SH 68 ALIGNMENT BETWEEN FM 2812 TO US 281 / I-69C.
- ANTICIPATING IN RECEIVING FINAL ENVIRONMENTAL IMPACT STATEMENT IN MAY / JUNE 2024



Design Modification #7 (DM 7) at FM 490

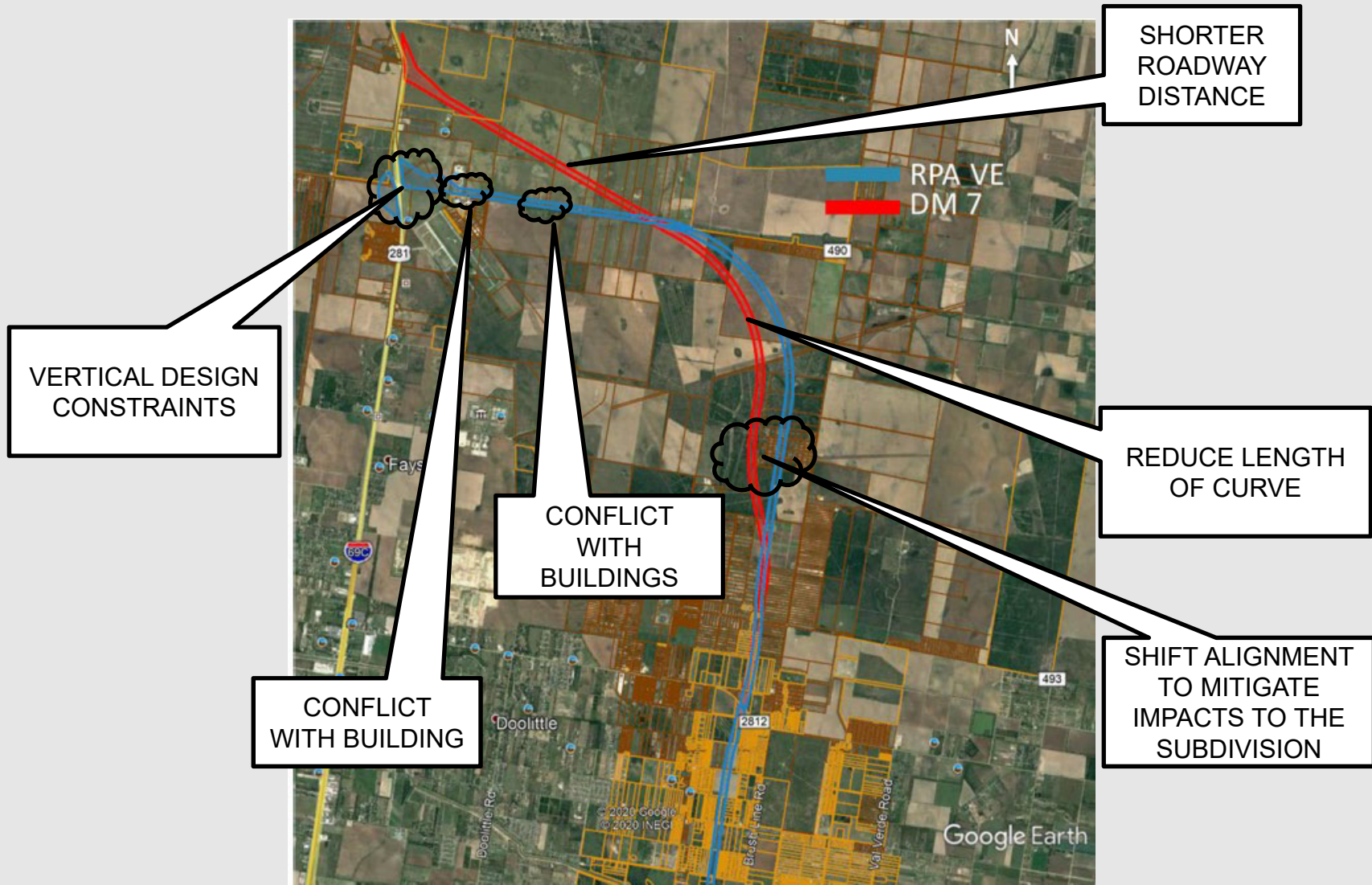
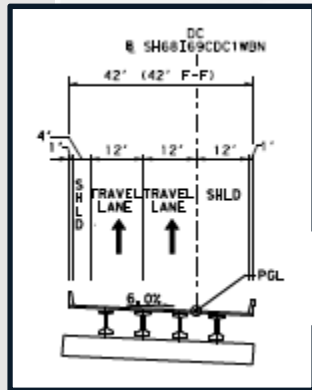


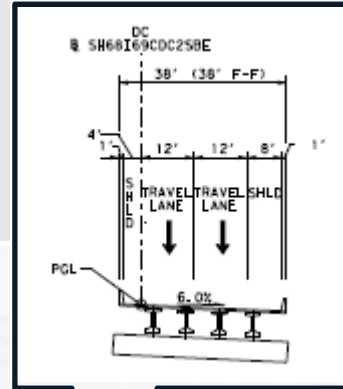
Figure 2 - SH 68 Design Modification 7
Source: RJ RIVERA Associates, Inc.

FAA OBSTRUCTION EVALUATION AT FM 490 / SH 68

FUTURE WEST TO SOUTH DIRECT CONNECTOR (APPROX. 75' ABOVE GROUND)

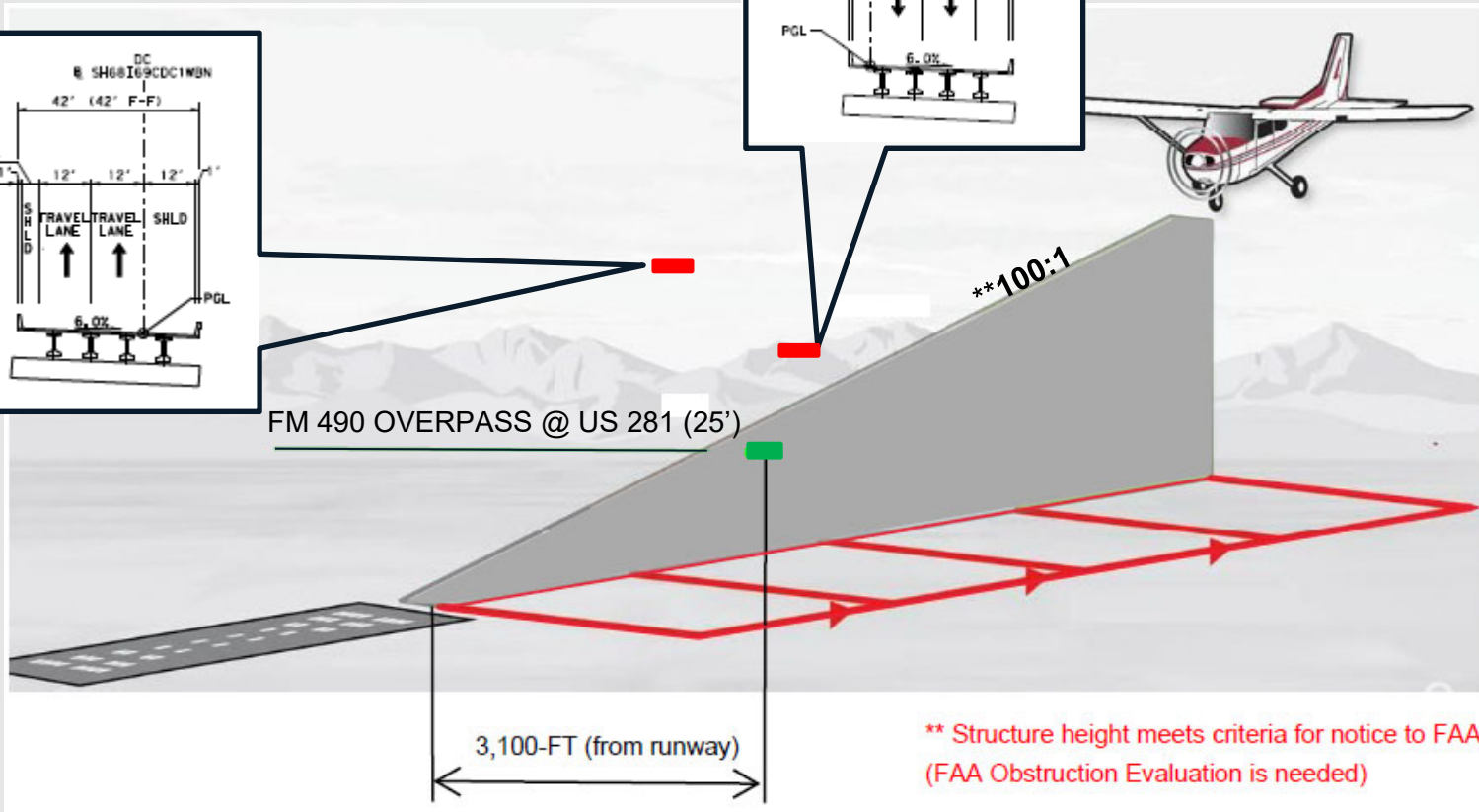


HIGH MAST ILLUMINATION (150' ABOVE GROUND)



PROPOSED SOUTH TO EAST DIRECT CONNECTOR (50' ABOVE GROUND)

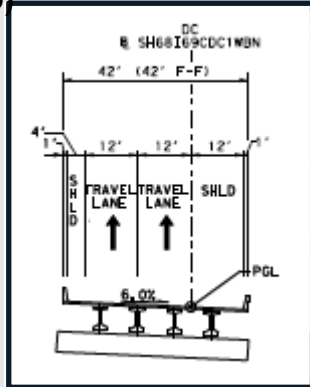
FM 490 OVERPASS @ US 281 (25')



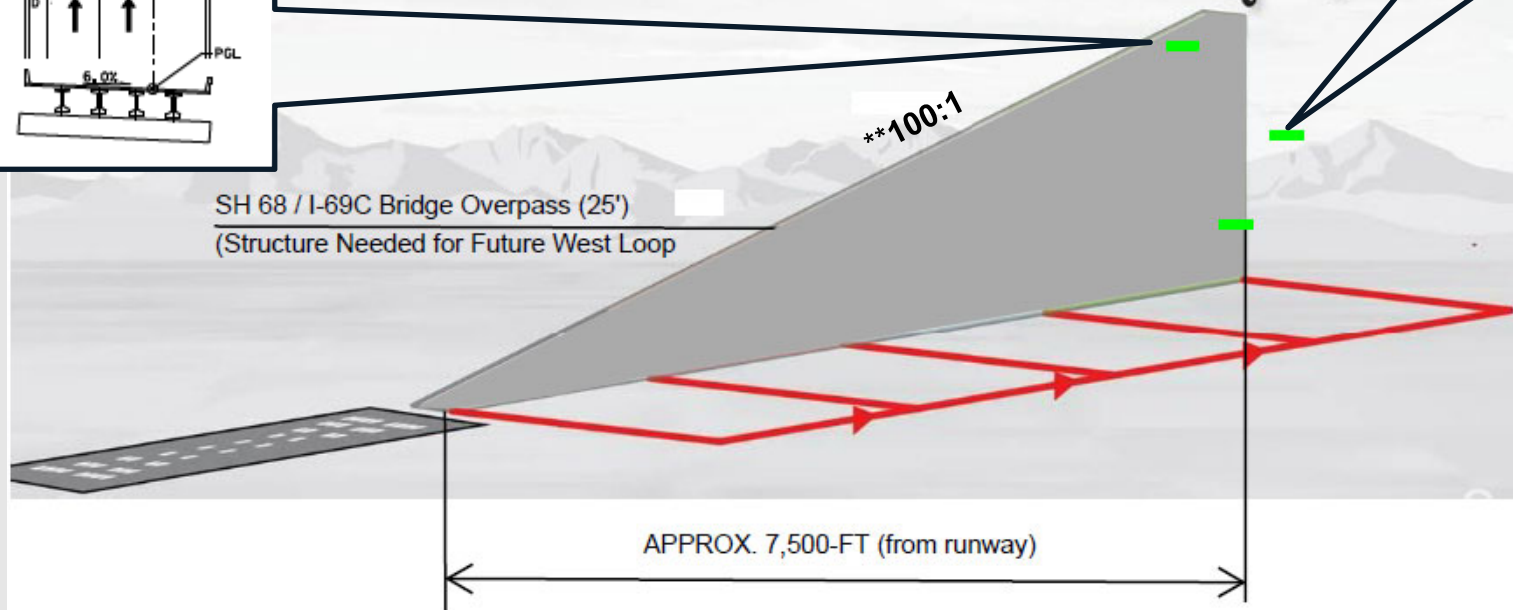
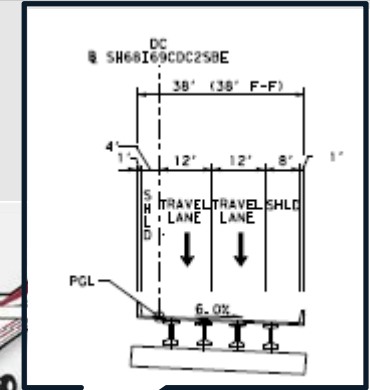
** Structure height meets criteria for notice to FAA (FAA Obstruction Evaluation is needed)

FAA OBSTRUCTION EVALUATION AT SH 68 & I-69C

FUTURE WEST TO SOUTH DIRECT CONNECTOR (APPROX. 75' ABOVE GROUND)

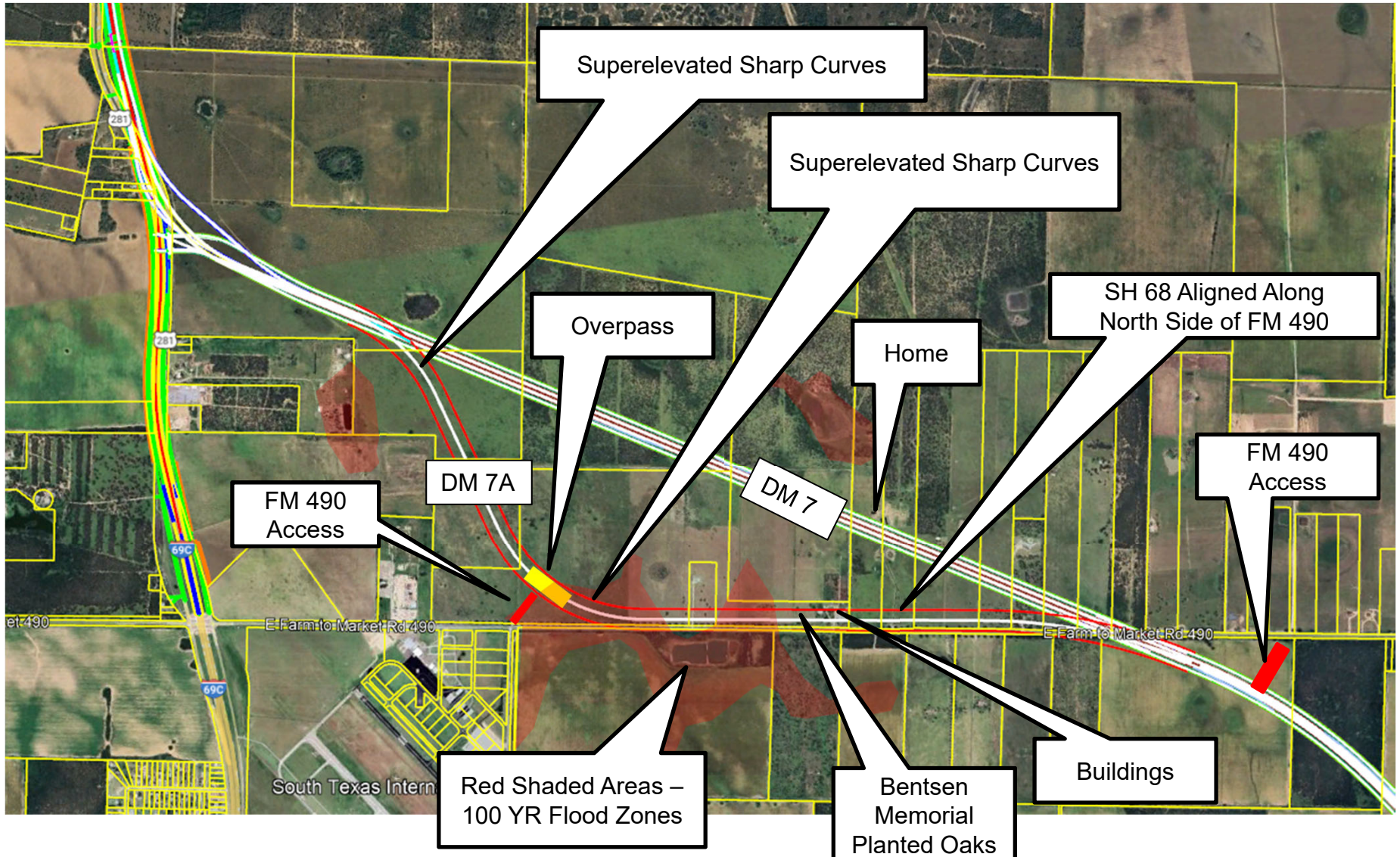


PROPOSED SOUTH TO EAST DIRECT CONNECTOR (50' ABOVE GROUND)

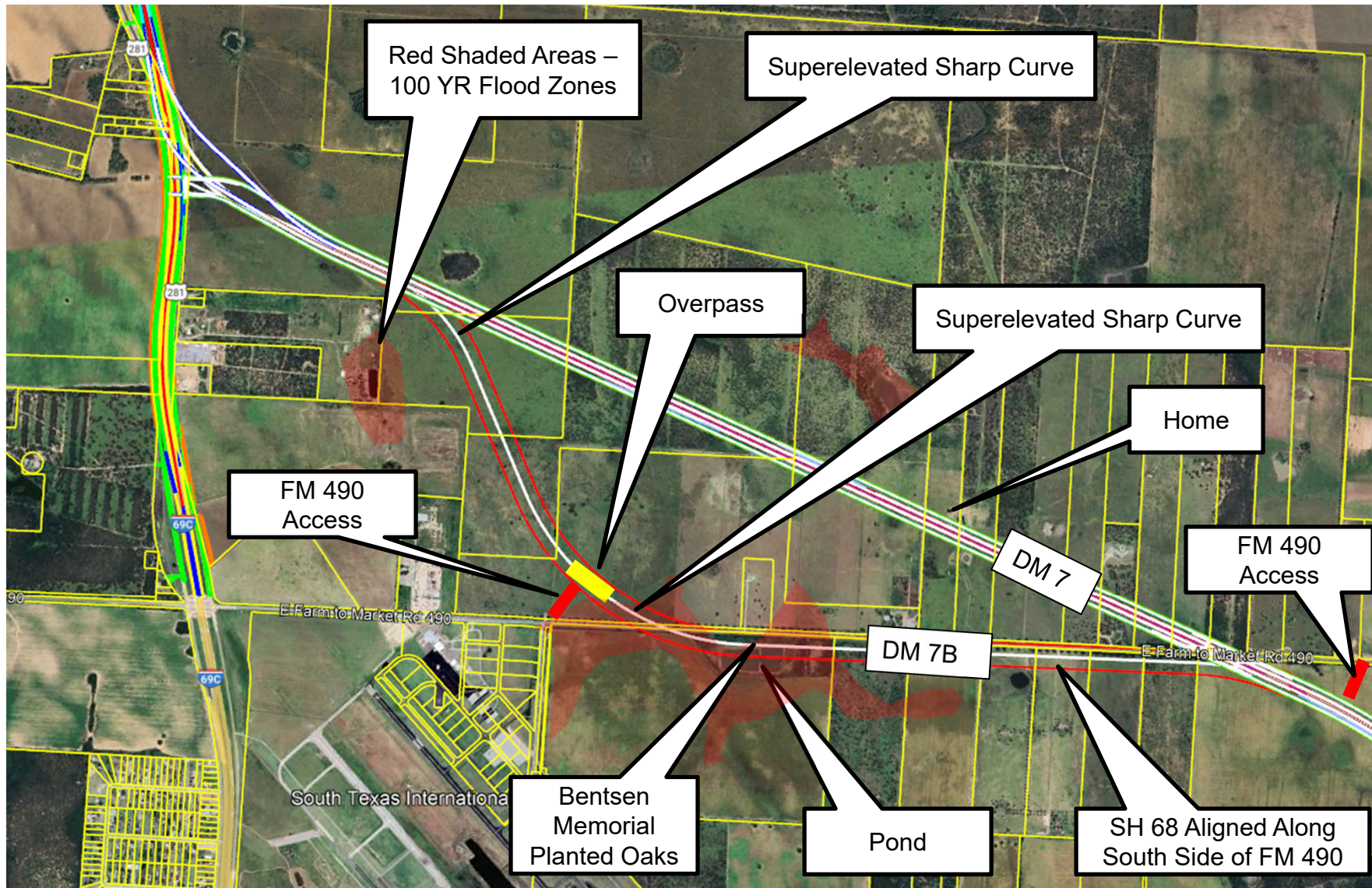


** Structure height meets criteria for notice to FAA (FAA Obstruction Evaluation is needed)

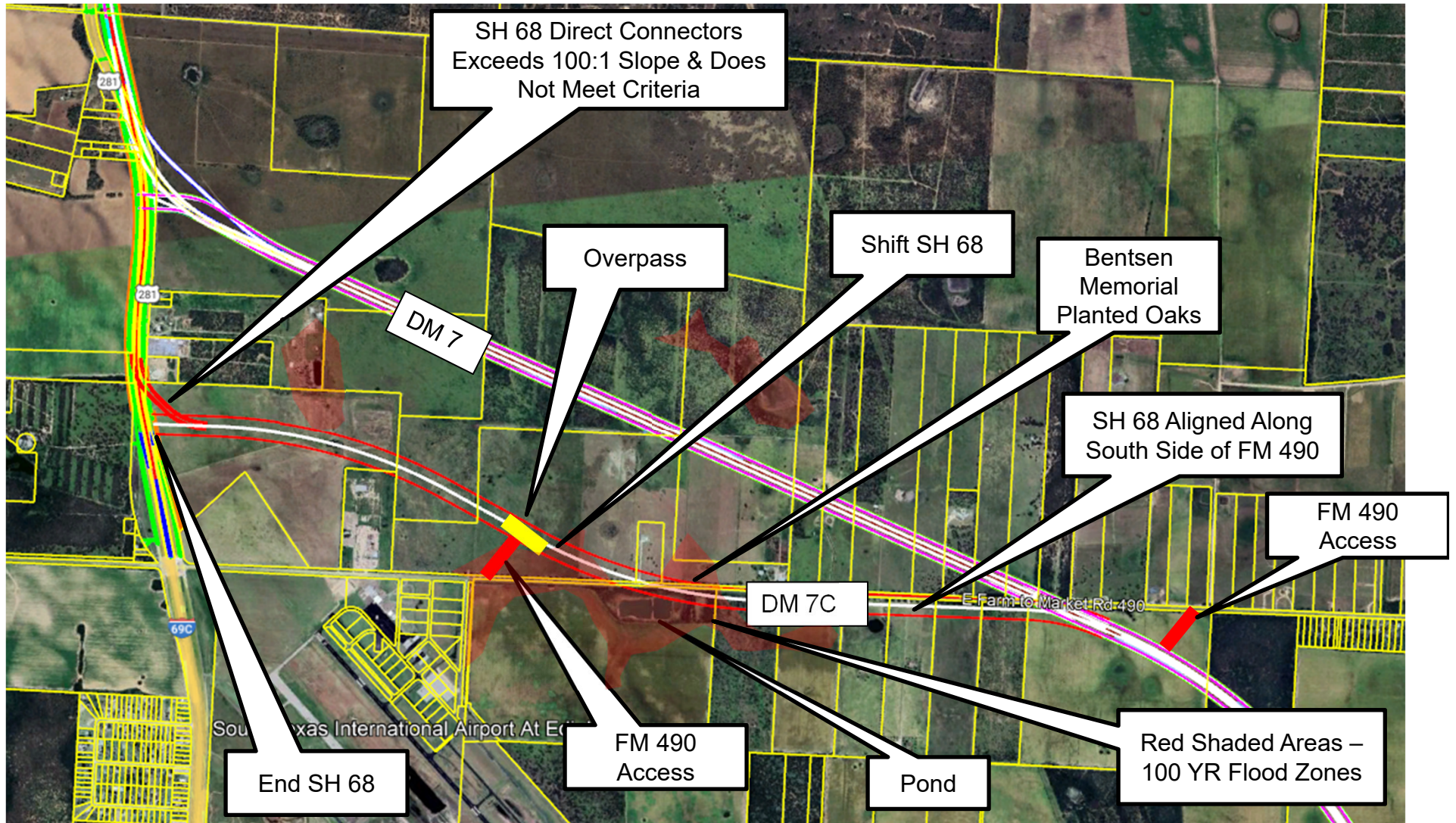
DM 7 vs DM 7A (SH 68 Aligned on Northside of FM 490)



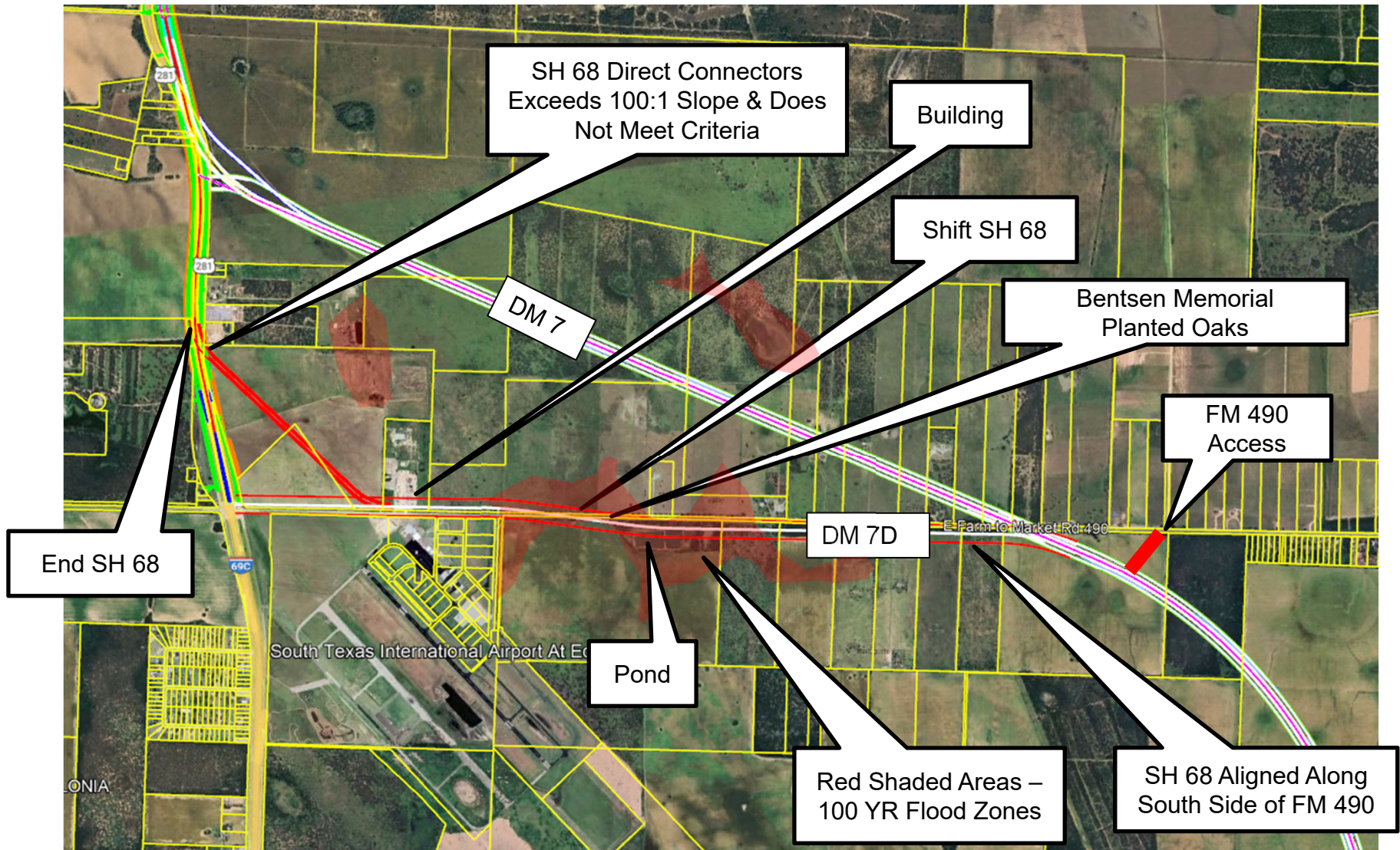
DM 7 vs DM 7B (SH 68 Aligned on Southside of FM 490)



DM 7 vs DM 7C



DM 7 vs DM 7D



SH 68 (DM 7) Alternatives Matrix

ADDITIONAL ALTERNATIVES TO DM 7

- DM7A, DM7B, DM7C, & DM7D
- DM7 Remained the Preferred Alternative

- BEST
- MEDIUM
- WORSE

CONSTRAINT	UNIT	DM7	DM7A	DM7B	DM7C	DM7D
Limits: SH 68 (DM 7 ALTERNATIVES)						
General Description		Alignment is straight with no curves between FM 490 and I-69C/US 281, was shown in the Feb. 2023 Public Meeting as the final preferred alignment, did not impact structures based on 2022 imagery, is impacting 1 residence built soon after 2022 imagery	Alignment curves along FM 490 on the NORTH SIDE at a distance of approx. 1.5 miles impacting several building structures before it curves sharply northwest direction through open land (1.10 miles). Alignment curves sharply again to the north west to the same ending point of DM7 (0.67 miles), will require realignment of FM 490 on the east side	Alignment curves along FM 490 on the SOUTH SIDE at a distance of approx. 1.5 miles impacting a pond before it curves sharply northwest direction through open land (1.10 miles). Alignment curves sharply again to the north west to the same ending point of DM7 (0.67 miles)	Alignment curves along FM 490 on the SOUTH SIDE at a distance of approx. 1.5 miles slightly impacting a pond before it curves gradually northwest direction through open land (1.10 miles), curves slightly again to the west to US 281(0.67 miles)	Alignment curves along FM 490 on the SOUTH SIDE at a distance of approx. 1.5 miles slightly impacting a pond before it curves gradually northwest direction crossing FM 490 then curves slightly again to the west along FM 490 impacting a sheet metal building to US 281 (0.67 miles)
Roadway Type		Rural Arterial	Rural Arterial	Rural Arterial	Rural Arterial	Rural Arterial
Bridges	Number	1	2	2	2	1
Fill in 100-yr Floodplain	Low/Medium/High	Low	Medium	High	High	High
Estimated Construction Cost	\$ Million	-	-	-	0	0
Utility impacts	Low/Medium/High	Low	Medium	Medium	Medium	High
Length	Miles	3.3	3.57	3.6	3.12	2.93
Total ROW Acquisition	Acres	128	126	127	115	112
Total Number of Parcels	Number	12	11	11	11	11
Number of Parcels (residential)	Number	2	4	4	3	3
Number of Parcels (commercial)	Number	0	0	0	0	1
Number of Parcels (undeveloped)	Number	9	7	10	9	9
Number of Parcels (school/cemetery)	Number	0	0	0	0	0
ROW Acquisition (residential)	Acres	10.5	19.4	11.3	12.7	12.7
ROW Acquisition (commercial)	Acres	0	0	0	0	4.08
ROW Acquisition (undeveloped)	Acres	117.5	106.6	115.7	102.3	95.22
ROW Acquisition (school/cemetery)	Acres	0	0	0	0	0
Displacements (residential)	Number	1	1	0	1	1
Displacements (commercial)	Number	0	0	0	0	0
Displacements (other)	Number	0	0	0	0	1
New Property Not Previously Impacted	Number	-	4	11	11	12
Airport Vertical Constraints (need FAA Assessment)	Low/Medium/High	Low	Low	Low	Medium	High
FAA Assessment require mitigation	Low/Medium/High	Low	Low	Low	Medium	High
Horizontal Curves (Superelevated)	Low/Medium/High	Low	High	High	Medium	Medium
Realignment of FM 490 (Connection to SH 68)	Number	0	2	2	2	1
Parks/recreational facilities	Number	0	0	0	0	0
FM 490 Oak Trees (Planted as Bentsen Memorial)	Low/Medium/High	Low	High	Medium	Medium	medium
Potential hazmat impacts	Low/Medium/High	low	low	low	low	low
Community facilities impacts	Low/Medium/High	Low	Medium	Medium	Medium	Medium
Archaeological impacts	Low/Medium/High	Low	Low	Low	Low	Low
Historic impacts	Low/Medium/High	Low	Low	Low	Low	Low
NWI Wetlands	Low/Medium/High	Low	Low	Medium	Medium	Medium
Streams	Number; LF	0	0	0	0	0
Irrigation Crossings	Number; LF	0	0	0	0	0
Drainage Crossings	Number; LF	0	0	0	0	0
Potential T&E impacts	Low/Medium/High	Low	Low	Low	Low	Low
Adjacent noise receivers	Low/Medium/High	Low	Medium	Medium	Medium	Medium
NDD						
Mexican mud-plantain	Acres					
alligator gar	Acres					
Drainage Design Issues at flood plain areas	Low/Medium/High	Low	Medium	High	High	High
Soils						
Impacts to Farm/Pasture/Ranch operations	Low/Medium/High	High	Medium	Medium	Medium	low
Prime Farmland if irrigated	Acres	0.00	0.00	0.00	0.00	0.00
Not Prime Farmland	Acres					